

REVISIONS			
LTR	DESCRIPTION	DATE	APPROVED
A	Update boilerplate paragraphs to current requirements. - PHN	11-09-19	Thomas M. Hess
B	Update boilerplate to current MIL-PRF-38535 requirements. - PHN	17-01-24	Thomas M. Hess



CURRENT DESIGN ACTIVITY CAGE CODE 16236
HAS CHANGED NAMES TO:
DLA LAND AND MARITIME
COLUMBUS, OHIO 43218-3990

Prepared in accordance with ASME Y14.24

Vendor item drawing

REV																				
PAGE																				
REV																				
PAGE																				

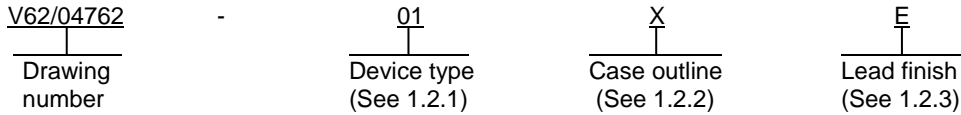
REV STATUS OF PAGES	REV	B	B	B	B	B	B	B	B	B	B								
	PAGE	1	2	3	4	5	6	7	8	9									

PMIC N/A	PREPARED BY Charles F. Saffle	DEFENSE SUPPLY CENTER, COLUMBUS COLUMBUS, OHIO 43218-3990	
Original date of drawing YY-MM-DD 04-12-20	CHECKED BY Charles F. Saffle	TITLE MICROCIRCUIT, DIGITAL, ADVANCED LOW-VOLTAGE CMOS, OCTAL BUFFER/DRIVER WITH 3-STATE OUTPUTS, MONOLITHIC SILICON	
	APPROVED BY Thomas M. Hess		
	SIZE A	CODE IDENT. NO. 16236	DWG NO. V62/04762
	REV	B	PAGE 1 OF 9

1. SCOPE

1.1 Scope. This drawing documents the general requirements of a high performance octal buffer/driver with 3-state outputs microcircuit, with an operating temperature range of -40°C to +85°C.

1.2 Vendor Item Drawing Administrative Control Number. The manufacturer's PIN is the item of identification. The vendor item drawing establishes an administrative control number for identifying the item on the engineering documentation:



1.2.1 Device type(s).

<u>Device type</u>	<u>Generic</u>	<u>Circuit function</u>
01	SN74ALVC244-EP	Octal buffer/driver with 3-state outputs

1.2.2 Case outline(s). The case outline(s) are as specified herein.

<u>Outline letter</u>	<u>Number of pins</u>	<u>JEDEC PUB 95</u>	<u>Package style</u>
X	20	JEDEC MO-153	Plastic small-outline

1.2.3 Lead finishes. The lead finishes are as specified below or other lead finishes as provided by the device manufacturer:

<u>Finish designator</u>	<u>Material</u>
A	Hot solder dip
B	Tin-lead plate
C	Gold plate
D	Palladium
E	Gold flash palladium

DEFENSE SUPPLY CENTER, COLUMBUS COLUMBUS, OHIO	SIZE A	CODE IDENT NO. 16236	DWG NO. V62/04762
		REV B	PAGE 2

1.3 Absolute maximum ratings. 1/

Supply voltage range (V_{CC})	-0.5 V to 4.6 V
Input voltage range (V_I)	-0.5 V to 4.6 V 2/
Output voltage range (V_O)	-0.5 V to $V_{CC} + 0.5$ V 2/ 3/
Input clamp current (I_{IK}) ($V_I < 0$)	-50 mA
Output clamp current (I_{OK}) ($V_O < 0$)	-50 mA
Continuous output current (I_O)	± 50 mA
Continuous current through V_{CC} or GND	± 100 mA
Package thermal impedance (θ_{JA})	83°C/W 4/
Storage temperature range (T_{STG})	-65°C to +150°C

1.4 Recommended operating conditions. 5/

Supply voltage range (V_{CC})	1.65 V to 3.6 V
Minimum high-level input voltage (V_{IH}):	
$V_{CC} = 1.65$ V to 1.95 V	0.65 x V_{CC}
$V_{CC} = 2.3$ V to 2.7 V	1.7 V
$V_{CC} = 2.7$ V to 3.6 V	2 V
Maximum low-level input voltage (V_{IL}):	
$V_{CC} = 1.65$ V to 1.95 V	0.35 x V_{CC}
$V_{CC} = 2.3$ V to 2.7 V	0.7 V
$V_{CC} = 2.7$ V to 3.6 V	0.8 V
Input voltage range (V_I)	0 V to 3.6 V
Output voltage range (V_O)	0 V to V_{CC}
Maximum high-level output current (I_{OH}):	
$V_{CC} = 1.65$ V	-4 mA
$V_{CC} = 2.3$ V	-12 mA
$V_{CC} = 2.7$ V	-12 mA
$V_{CC} = 3$ V	-24 mA
Maximum low-level output current (I_{OL}):	
$V_{CC} = 1.65$ V	4 mA
$V_{CC} = 2.3$ V	12 mA
$V_{CC} = 2.7$ V	12 mA
$V_{CC} = 3$ V	24 mA
Maximum input transition rise or fall rate ($\Delta t/\Delta v$)	5 ns/V
Operating free-air temperature range (T_A)	-40°C to +85°C

1/ Stresses beyond those listed under “absolute maximum ratings” may cause permanent damage to the device. These are stress ratings only, and functional operation of the device at these or any other conditions beyond those indicated under “recommended operating conditions” is not implied. Exposure to absolute-maximum-rated conditions for extended periods may affect device reliability.

2/ The input negative-voltage and output voltage ratings may be exceeded if the input and output current ratings are observed.

3/ This value is limited to 4.6 V maximum.

4/ The package thermal impedance is calculated in accordance with JESD 51-7.

5/ All unused inputs of the device must be held at V_{CC} or GND to ensure proper device operation.

DEFENSE SUPPLY CENTER, COLUMBUS COLUMBUS, OHIO	SIZE A	CODE IDENT NO. 16236	DWG NO. V62/04762
		REV B	PAGE 3

2. APPLICABLE DOCUMENTS

JEDEC – SOLID STATE TECHNOLOGY ASSOCIATION (JEDEC)

- JEDEC PUB 95 – Registered and Standard Outlines for Semiconductor Devices
- JEDEC STD 51-7 – High Effective Thermal Conductivity Test Board for Leaded Surface Mount Packages

(Copies of these documents are available online at <http://www.jedec.org> or from JEDEC – Solid State Technology Association, 3103 North 10th Street, Suite 240–S, Arlington, VA 22201.)

3. REQUIREMENTS

3.1 Marking. Parts shall be permanently and legibly marked with the manufacturer’s part number as shown in 6.3 herein and as follows:

- A. Manufacturer’s name, CAGE code, or logo
- B. Pin 1 identifier
- C. ESDS identification (optional)

3.2 Unit container. The unit container shall be marked with the manufacturer’s part number and with items A and C (if applicable) above.

3.3 Electrical characteristics. The maximum and recommended operating conditions and electrical performance characteristics are as specified in 1.3, 1.4, and table I herein.

3.4 Design, construction, and physical dimension. The design, construction, and physical dimensions are as specified herein.

3.5 Diagrams.

3.5.1 Case outline. The case outline shall be as shown in 1.2.2 and figure 1.

3.5.2 Function table. The function table shall be as shown in figure 2.

3.5.3 Logic diagram. The logic diagram shall be as shown in figure 3.

3.5.4 Terminal connections. The terminal connections shall be as shown in figure 4.

3.5.5 Timing waveforms and test circuit. The timing waveforms and test circuit shall be as shown in figure 5.

DEFENSE SUPPLY CENTER, COLUMBUS COLUMBUS, OHIO	SIZE A	CODE IDENT NO. 16236	DWG NO. V62/04762
		REV B	PAGE 4

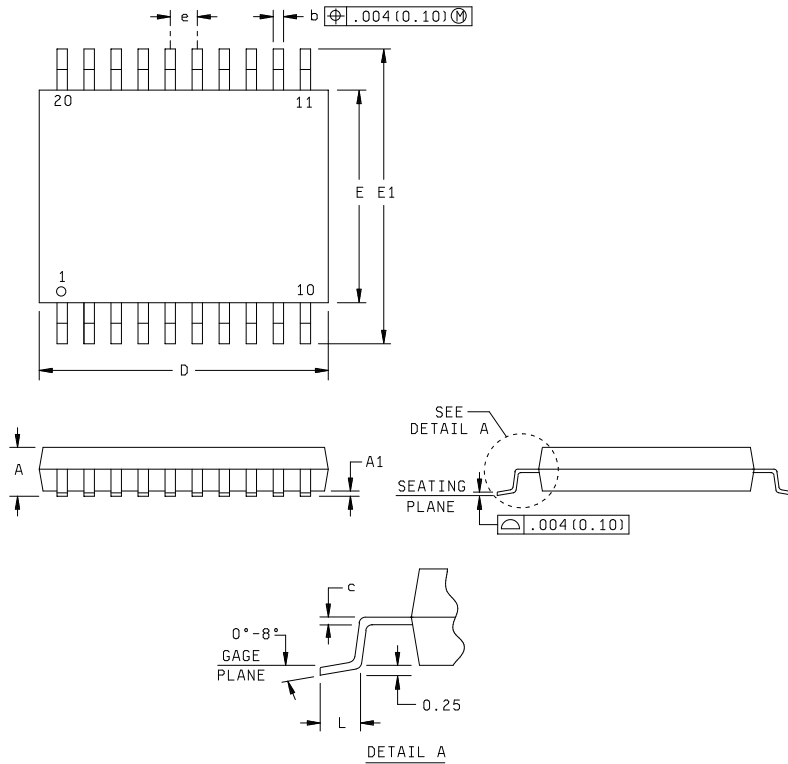
TABLE I. Electrical performance characteristics. 1/

Test	Symbol	Conditions	V _{CC}	Temperature, T _A	Limits		Unit
					Min	Max	
High level output voltage	V _{OH}	I _{OH} = -100 μA	1.65 V to 3.6 V	25°C, -40°C to 85°C	V _{CC} - 0.2		V
		I _{OH} = -4 mA	1.65 V		1.2		
		I _{OH} = -6 mA	2.3 V		2		
		I _{OH} = -12 mA	2.3 V		1.7		
			2.7 V		2.2		
			3 V		2.4		
Low level output voltage	V _{OL}	I _{OL} = 100 μA	1.65 V to 3.6 V			0.2	V
		I _{OL} = 4 mA	1.65 V			0.45	
		I _{OL} = 6 mA	2.3 V			0.4	
		I _{OL} = 12 mA	2.3 V			0.7	
			2.7 V			0.4	
		I _{OL} = 24 mA	3 V			0.55	
Input current	I _I	V _I = V _{CC} or GND	3.6V			±5	μA
Off-state output current	I _{OZ}	V _O = V _{CC} or GND	3.6 V			±10	μA
Quiescent supply current	I _{CC}	V _I = V _{CC} or GND, I _O = 0 A	3.6 V			10	μA
Quiescent supply current delta	ΔI _{CC}	One input at V _{CC} - 0.6 V, Other inputs at V _{CC} or GND	3 V to 3.6 V			750	μA
Input capacitance	C _I	Control inputs and data inputs V _I = V _{CC} or GND	3.3 V	25°C	4.5 TYP		pF
Output capacitance	C _O	V _O = V _{CC} or GND	3.3 V		7.5 TYP		pF
Power dissipation capacitance per buffer/driver	C _{pd}	Outputs enabled C _L = 0 pF f = 10 MHz	1.8 V	25°C	22 TYP		pF
			2.5 V		23 TYP		
			3.3 V		26 TYP		
		Outputs disabled C _L = 0 pF f = 10 MHz	1.8 V		1 TYP		
			2.5 V		1 TYP		
			3.3 V		1 TYP		
Propagation delay time, A to Y	t _{pd}	See figure 5.	1.8 V ±0.15 V	25°C, -40°C to 85°C	1	4.4	ns
			2.5 V ±0.2 V		1	3.1	
			2.7 V			3.1	
			3.3 V ±0.3 V		1.1	2.8	
Propagation delay time, output enable, OE to Y	t _{en}	See figure 5.	1.8 V ±0.15 V	25°C, -40°C to 85°C	1.8	6.9	ns
			2.5 V ±0.2 V		1.5	5.4	
			2.7 V			5.3	
			3.3 V ±0.3 V		1.5	4.5	
Propagation delay time, output disable, OE to Y	t _{dis}	See figure 5.	1.8 V ±0.15 V	25°C, -40°C to 85°C	1.8	5.9	ns
			2.5 V ±0.2 V		1	4.1	
			2.7 V			4.4	
			3.3 V ±0.3 V		1.7	4.2	

1/ Testing and other quality control techniques are used to the extent deemed necessary to assure product performance over the specified temperature range. Product may not necessarily be tested across the full temperature range and all parameters may not necessarily be tested. In the absence of specific parametric testing, product performance is assured by characterization and/or design.

DEFENSE SUPPLY CENTER, COLUMBUS COLUMBUS, OHIO	SIZE A	CODE IDENT NO. 16236	DWG NO. V62/04762
		REV B	PAGE 5

Case X



Dimensions									
Symbol	Millimeters		Inches		Symbol	Millimeters		Inches	
	Min	Max	Min	Max		Min	Max	Min	Max
A	---	1.20	---	.047	E	4.30	4.50	.169	.177
A1	0.05	0.15	.002	.006	E1	6.20	6.60	.244	.260
b	0.19	0.30	.007	.012	e	0.65 BSC		.026 BSC	
c	0.15 NOM		.006 NOM		L	0.50	0.75	.020	.030
D	6.40	6.60	.252	.260					

NOTES:

1. This drawing is subject to change without notice.
2. Falls within JEDEC MO-153.
3. All linear dimensions are shown in millimeters (inches). Inches equivalents are given for general information only.
4. Body dimensions do not include mold flash or protrusion not to exceed 0.15 millimeters (0.006 inches).

FIGURE 1. Case outline.

DEFENSE SUPPLY CENTER, COLUMBUS COLUMBUS, OHIO	SIZE A	CODE IDENT NO. 16236	DWG NO. V62/04762
		REV B	PAGE 6

(each buffer/driver)

Inputs		Output
\overline{OE}	A	Y
L	H	H
L	L	L
H	X	Z

H = High voltage level
L = Low voltage level

X = Immaterial
Z = High impedance state

FIGURE 2. Function table.

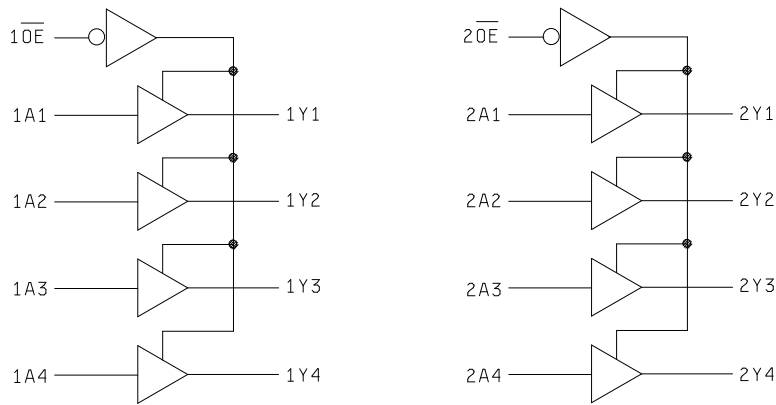
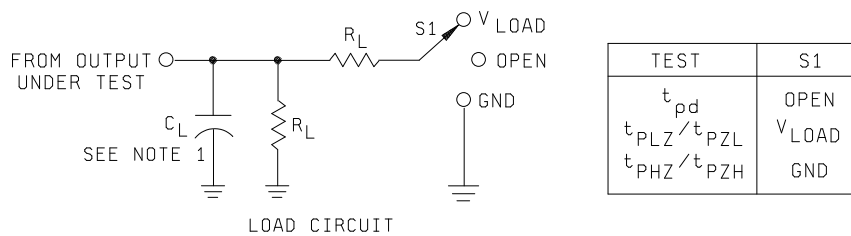


FIGURE 3. Logic diagram.

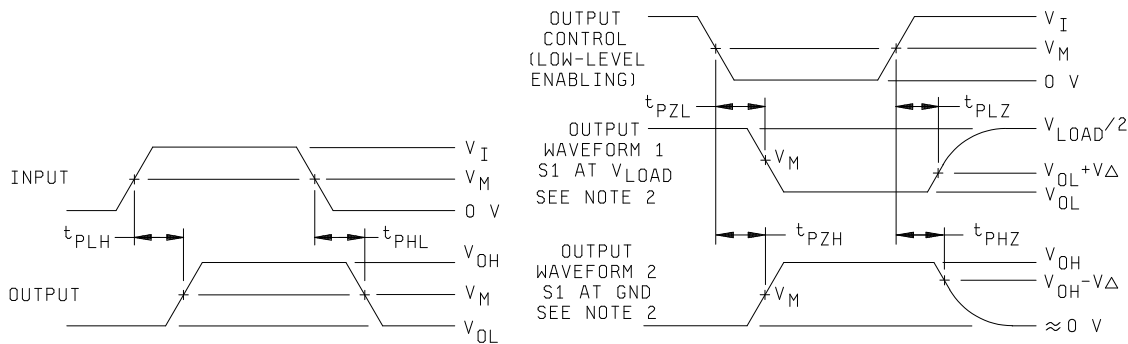
Device type	01		
Case outline	X		
Terminal number	Terminal symbol	Terminal number	Terminal symbol
1	$\overline{1OE}$	11	2A1
2	1A1	12	1Y4
3	2Y4	13	2A2
4	1A2	14	1Y3
5	2Y3	15	2A3
6	1A3	16	1Y2
7	2Y2	17	2A4
8	1A4	18	1Y1
9	2Y1	19	$\overline{2OE}$
10	GND	20	V _{CC}

FIGURE 4. Terminal connections.

DEFENSE SUPPLY CENTER, COLUMBUS COLUMBUS, OHIO	SIZE A	CODE IDENT NO. 16236	DWG NO. V62/04762
		REV B	PAGE 7



V_{CC}	INPUTS		V_M	V_{LOAD}	C_L	R_L	V_{Δ}
	V_I	t_r/t_f					
1.8 V \pm 0.15	V_{CC}	≤ 2 ns	$V_{CC}/2$	$2 \times V_{CC}$	30 pF	1 k Ω	0.15 V
2.5 V \pm 0.2 V	V_{CC}	≤ 2 ns	$V_{CC}/2$	$2 \times V_{CC}$	30 pF	500 Ω	0.15 V
2.7 V	2.7 V	≤ 2.5 ns	1.5 V	6 V	50 pF	500 Ω	0.3 V
3.3 V \pm 0.3 V	2.7 V	≤ 2.5 ns	1.5 V	6 V	50 pF	500 Ω	0.3 V



NOTES:

- C_L includes probe and jig capacitance.
- Waveform 1 is for an output with internal conditions such that the output is low, except when disabled by the output control. Waveform 2 is for an output with internal conditions such that the output is high, except when disabled by the output control.
- All input pulses are supplied by generators having the following characteristics: $PRR \leq 1$ MHz, $Z_O = 50\Omega$.
- The outputs are measured one at a time, with one input transition per measurement.
- t_{PLH} and t_{PHL} are the same as t_{pd} .
- t_{PZL} and t_{PZH} are the same as t_{en} .
- t_{PLZ} and t_{PHZ} are the same as t_{dis} .

FIGURE 5. Timing waveforms and test circuit.

DEFENSE SUPPLY CENTER, COLUMBUS COLUMBUS, OHIO	SIZE A	CODE IDENT NO. 16236	DWG NO. V62/04762
		REV B	PAGE 8

4. VERIFICATION

4.1 Product assurance requirements. The manufacturer is responsible for performing all inspection and test requirements as indicated in their internal documentation. Such procedures should include proper handling of electrostatic sensitive devices, classification, packaging, and labeling of moisture sensitive devices, as applicable.

5. PREPARATION FOR DELIVERY

5.1 Packaging. Preservation, packaging, labeling, and marking shall be in accordance with the manufacturer's standard commercial practices for electrostatic discharge sensitive devices.

6. NOTES

6.1 ESDS. Devices are electrostatic discharge sensitive and are classified as ESDS class 1 minimum.

6.2 Configuration control. The data contained herein is based on the salient characteristics of the device manufacturer's data book. The device manufacturer reserves the right to make changes without notice. This drawing will be modified as changes are provided.

6.3 Suggested source(s) of supply. Identification of the suggested source(s) of supply herein is not to be construed as a guarantee of present or continued availability as a source of supply for the item. DLA Land and Maritime maintains an online database of all current sources of supply at <https://landandmaritimeapps.dla.mil/programs/smcr/default.aspx>

Vendor item drawing administrative control number <u>1/</u>	Device manufacturer CAGE code	Vendor part number	Top-Side Marking
V62/04762-01XE	01295	SN74ALVC244IPWREP	VA244IEP

1/ The vendor item drawing establishes an administrative control number for identifying the item on the engineering documentation.

CAGE code

01295

Source of supply

Texas Instruments, Inc.
 Semiconductor Group
 8505 Forest lane
 P.O. Box 660199
 Dallas, TX 75243
 Point of contact: U.S. Highway 75 South
 P.O. Box 84, M/S 853
 Sherman, TX 75090-9493

DEFENSE SUPPLY CENTER, COLUMBUS COLUMBUS, OHIO	SIZE A	CODE IDENT NO. 16236	DWG NO. V62/04762
		REV B	PAGE 9