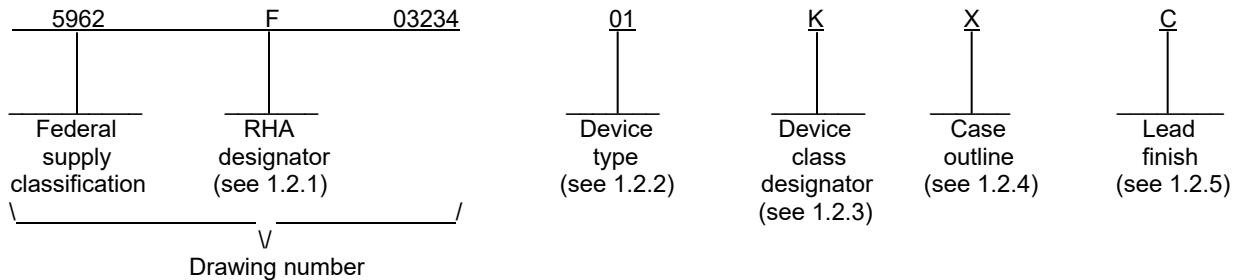




1. SCOPE

1.1 Scope. This drawing documents five product assurance classes as defined in paragraph 1.2.3 and MIL-PRF-38534. A choice of case outlines and lead finishes are available and are reflected in the Part or Identifying Number (PIN). When available, a choice of radiation hardness assurance levels is reflected in the PIN.

1.2 PIN. The PIN is as shown in the following example:



1.2.1 Radiation hardness assurance (RHA) designator. RHA marked devices meet the MIL-PRF-38534 specified RHA levels and are marked with the appropriate RHA designator. A dash (-) indicates a non-RHA device.

1.2.2 Device type(s). The device type(s) identify the circuit function as follows:

<u>Device type</u>	<u>Generic number</u>	<u>Circuit function</u>
01	ACT8502	48 channel, voltage and current analog multiplexer, high impedance analog input with ESD protection
02	ACT8506	48 channel, voltage and current analog multiplexer, high impedance analog input
03	ACT8503	48 channel, analog multiplexer, high impedance analog input with ESD protection

1.2.3 Device class designator. This device class designator is a single letter identifying the product assurance level. All levels are defined by the requirements of MIL-PRF-38534 and require QML Certification as well as qualification (Class H, K, and E) or QML Listing (Class G and D). The product assurance levels are as follows:

<u>Device class</u>	<u>Device performance documentation</u>
K	Highest reliability class available. This level is intended for use in space applications.
H	Standard military quality class level. This level is intended for use in applications where non-space high reliability devices are required.
G	Reduced testing version of the standard military quality class. This level uses the Class H screening and In-Process Inspections with a possible limited temperature range, manufacturer specified incoming flow, and the manufacturer guarantees (but may not test) periodic and conformance inspections (Group A, B, C and D).
E	Designates devices which are based upon one of the other classes (K, H, or G) with exception(s) taken to the requirements of that class. These exception(s) must be specified in the device acquisition document; therefore the acquisition document should be reviewed to ensure that the exception(s) taken will not adversely affect system performance.
D	Manufacturer specified quality class. Quality level is defined by the manufacturers internal, QML certified flow. This product may have a limited temperature range.

<b>STANDARD MICROCIRCUIT DRAWING</b> DLA LAND AND MARITIME COLUMBUS, OHIO 43218-3990	SIZE <b>A</b>		<b>5962-03234</b>
		REVISION LEVEL <b>F</b>	SHEET <b>2</b>

1.2.4 Case outline(s). The case outline(s) are as designated in MIL-STD-1835 and as follows:

<u>Outline letter</u>	<u>Descriptive designator</u>	<u>Terminals</u>	<u>Package style</u>
X	See figure 1	96	Ceramic quad flat pack

1.2.5 Lead finish. The lead finish is as specified in MIL-PRF-38534.

1.3 Absolute maximum ratings. 1/

Positive supply voltage between +V <sub>EE</sub> and GND.....	+16.5 V dc
Negative supply voltage between -V <sub>EE</sub> and GND.....	-16.5 V dc
V <sub>REF</sub> to GND.....	+16.5 V dc
Digital input overvoltage range:	
V <sub>EN</sub> (pins 5, 6, 91, and 92).....	(< V <sub>REF</sub> + 4)V, (> GND - 4)V
V <sub>A</sub> (pins 1, 3, 93, and 95).....	(< V <sub>REF</sub> + 4)V, (> GND - 4)V
V <sub>B</sub> (pins 2, 4, 94, and 96).....	(< V <sub>REF</sub> + 4)V, (> GND - 4)V
Analog input overvoltage range	
Device types 01 and 03.....	-18 V dc ≤ V <sub>S</sub> ≤ +18 V dc
Device type 02.....	-25 V dc ≤ V <sub>S</sub> ≤ +25 V dc
Power dissipation (P <sub>D</sub> ), T <sub>C</sub> = -55°C to +125°C:	
Device type 01 and 02.....	120 mW
Device type 03.....	60 mW
Thermal resistance junction-to-case (θ <sub>JC</sub> ).....	10°C/W <u>2/</u>
Storage temperature range.....	-55°C to +150°C
Lead temperature (soldering, 10 seconds).....	+300°C

1.4 Recommended operating conditions.

Positive supply voltage (+V <sub>EE</sub> ).....	+15 V dc <u>3/</u>
Negative supply voltage (-V <sub>EE</sub> ).....	-15 V dc <u>3/</u>
V <sub>REF</sub> .....	+5 V dc <u>3/</u>
Logic low level voltage (V <sub>AL</sub> ).....	+0.8 V dc
Logic high level voltage (V <sub>AH</sub> ).....	+4.0 V dc
Case operating temperature range (T <sub>C</sub> ).....	-55°C to +125°C

1.5 Radiation features. 4/

Maximum Total Ionizing Dose (TID) (dose rate = 50 - 300 rad(Si)/s) ...	300 krad(Si) <u>5/</u> <u>6/</u>
Enhanced Low Dose Rate Sensivity (ELDRS).....	150 krad(Si) <u>5/</u>
Single Event Phenomenon (SEP) effective linear energy transfer (LET):	
Single Event Latchup (SEL).....	Immune <u>5/</u>
Single Event Upset (SEU).....	≤ 86 MeV-cm <sup>2</sup> /mg <u>7/</u>
Single Event Transient (SET).....	≤ 86 MeV-cm <sup>2</sup> /mg <u>7/</u>

1/ Stresses above the absolute maximum ratings may cause permanent damage to the device. Extended operation at the maximum levels may degrade performance and affect reliability.

2/ Based on the maximum power dissipation spread over the multiplexer die.

3/ Recommended power supply turn on sequence : +V<sub>CC</sub>, -V<sub>EE</sub>, followed by V<sub>REF</sub>.

4/ See section 4.3.5 for the manufacturer's radiation hardness assurance analysis and testing.

5/ The only active element in these devices are purchased as SMD 5962F9563002V9A which assures TID, ELDRS, and SEL.

6/ The package in this drawing is a larger version of the same type (flat package) as the one in SMD 5962-95630, the lid underside is nickel plate (no gold), and IGA data shows negligible amounts of hydrogen.

7/ SEU and SET testing performed at 86 MeV-cm<sup>2</sup>/mg with no upsets or single event transients. These devices will be re-tested after design or process changes that can affect RHA response of these devices.

<b>STANDARD MICROCIRCUIT DRAWING</b> DLA LAND AND MARITIME COLUMBUS, OHIO 43218-3990	SIZE <b>A</b>		<b>5962-03234</b>
		REVISION LEVEL <b>F</b>	SHEET <b>3</b>

## 2. APPLICABLE DOCUMENTS

2.1 Government specification, standards, and handbooks. The following specification, standards, and handbooks form a part of this drawing to the extent specified herein. Unless otherwise specified, the issues of these documents are those cited in the solicitation or contract.

### DEPARTMENT OF DEFENSE SPECIFICATIONS

MIL-PRF-38534 - Hybrid Microcircuits, General Specification for.

### DEPARTMENT OF DEFENSE STANDARDS

MIL-STD-883 - Test Method Standard Microcircuits.

MIL-STD-1835 - Interface Standard for Electronic Component Case Outlines.

### DEPARTMENT OF DEFENSE HANDBOOKS

MIL-HDBK-103 - List of Standard Microcircuit Drawings.

MIL-HDBK-780 - Standard Microcircuit Drawings.

(Copies of these documents are available online at <https://quicksearch.dla.mil/>.)

2.2 Order of precedence. In the event of a conflict between the text of this drawing and the references cited herein, the text of this drawing takes precedence. Nothing in this document, however, supersedes applicable laws and regulations unless a specific exemption has been obtained.

## 3. REQUIREMENTS

3.1 Item requirements. The individual item performance requirements for device classes D, E, G, H, and K shall be in accordance with MIL-PRF-38534 as specified herein. Compliance with MIL-PRF-38534 shall include the performance of all tests herein or as designated in the device manufacturer's Quality Management (QM) plan or as designated for the applicable device class. The manufacturer may eliminate, modify, or optimize the tests and inspections herein; however, the performance requirements as defined in MIL-PRF-38534 shall be met for the applicable device class. In addition, the modification in the QM plan shall not affect the form, fit, or function of the device for the applicable device class.

3.2 Design, construction, and physical dimensions. The design, construction, and physical dimensions shall be as specified in MIL-PRF-38534 and herein.

3.2.1 Case outline(s). The case outline(s) shall be in accordance with 1.2.4 herein and figure 1.

3.2.2 Terminal connections. The terminal connections shall be as specified on figure 2.

3.2.3 Truth table(s). The truth table(s) shall be as specified on figure 3.

3.2.4 Switching waveform(s). The switching waveform(s) shall be as specified on figure 4.

3.2.5 Block diagram. The block diagram shall be as specified on figure 5.

3.3 Electrical performance characteristics. Unless otherwise specified herein, the electrical performance characteristics are as specified in table I and shall apply over the full specified operating temperature range.

3.4 Electrical test requirements. The electrical test requirements shall be the subgroups specified in table II. The electrical tests for each subgroup are described in table I.

3.5 Marking of device(s). Marking of device(s) shall be in accordance with MIL-PRF-38534. The device shall be marked with the PIN listed in 1.2 herein. In addition, the manufacturer's vendor similar PIN may also be marked.

<b>STANDARD MICROCIRCUIT DRAWING</b> DLA LAND AND MARITIME COLUMBUS, OHIO 43218-3990	SIZE <b>A</b>		<b>5962-03234</b>
		REVISION LEVEL <b>F</b>	SHEET <b>4</b>

3.6 Data. In addition to the general performance requirements of MIL-PRF-38534, the manufacturer of the device described herein shall maintain the electrical test data (variables format) from the initial quality conformance inspection group A lot sample, for each device type listed herein. Also, the data should include a summary of all parameters manually tested, and for those which, if any, are guaranteed. This data shall be maintained under document revision level control by the manufacturer and be made available to the preparing activity (DLA Land and Maritime-VA) upon request.

3.7 Certificate of compliance. A certificate of compliance shall be required from a manufacturer in order to supply to this drawing. The certificate of compliance (original copy) submitted to DLA Land and Maritime-VA shall affirm that the manufacturer's product meets the performance requirements of MIL-PRF-38534 and herein.

3.8 Certificate of conformance. A certificate of conformance as required in MIL-PRF-38534 shall be provided with each lot of microcircuits delivered to this drawing.

<b>STANDARD MICROCIRCUIT DRAWING</b> DLA LAND AND MARITIME COLUMBUS, OHIO 43218-3990	SIZE <b>A</b>		<b>5962-03234</b>
		REVISION LEVEL <b>F</b>	SHEET <b>5</b>

TABLE I. Electrical performance characteristics.

Test	Symbol	Conditions <u>1/ 2/</u> -55°C ≤ T <sub>A</sub> ≤ +125°C unless otherwise specified	Group A subgroups	Device type	Limits		Unit
					Min	Max	
Supply currents	+I <sub>CC</sub>	V <sub>EN(0-63)</sub> = V <sub>A(0-3)A</sub> = V <sub>A(0-3)B</sub> = 0	1,2,3	01,02	0.3	3	mA
				03	0.3	1.5	
	-I <sub>EE</sub>	V <sub>EN(0-63)</sub> = V <sub>A(0-3)A</sub> = V <sub>A(0-3)B</sub> = 0	1,2,3	01,02	-3	-0.3	mA
				03	-1.5	-0.3	
	+I <sub>SBY</sub>	V <sub>EN(0-63)</sub> = 4 V, V <sub>A(0-3)A</sub> = V <sub>A(0-3)B</sub> = 0 <u>3/</u>	1,2,3	01,02	0.3	3	mA
				03	0.3	1.5	
	-I <sub>SBY</sub>	V <sub>EN(0-63)</sub> = 4 V, V <sub>A(0-3)A</sub> = V <sub>A(0-3)B</sub> = 0 <u>3/</u>	1,2,3	01,02	-3.0	-0.3	mA
				03	-1.5	-0.3	
Address input currents	I <sub>AL(0-3)</sub>	V <sub>A</sub> = 0 V <u>2/</u>	1,2,3 <u>4/</u>	01,02	-6	6	μA
				03	-3	3	
	I <sub>AH(0-3)</sub>	V <sub>A</sub> = 5 V <u>2/</u>	1,2,3 <u>4/</u>	01,02	-6	6	μA
				03	-3	3	
Enable input current	I <sub>ENL(0-15)</sub>	V <sub>EN(0-15)</sub> = 0 V	1,2,3 <u>4/</u>	01,02	-2	2	μA
				03	-1	1	
	I <sub>ENH(0-15)</sub>	V <sub>EN(0-15)</sub> = 5 V	1,2,3 <u>4/</u>	01,02	-2	2	μA
				03	-1	1	
	I <sub>ENL(16-31)</sub>	V <sub>EN(16-31)</sub> = 0 V	1,2,3 <u>4/</u>	01,02	-2	2	μA
				03	-1	1	
	I <sub>ENH(16-31)</sub>	V <sub>EN(16-31)</sub> = 5 V	1,2,3 <u>4/</u>	01,02	-2	2	μA
				03	-1	1	
	I <sub>ENL(32-47)</sub>	V <sub>EN(32-47)</sub> = 0 V	1,2,3 <u>4/</u>	01,02	-2	2	μA
				03	-1	1	
	I <sub>ENH(32-47)</sub>	V <sub>EN(32-47)</sub> = 5 V	1,2,3 <u>4/</u>	01,02	-2	2	μA
				03	-1	1	

See footnotes at end of table.

<b>STANDARD MICROCIRCUIT DRAWING</b> DLA LAND AND MARITIME COLUMBUS, OHIO 43218-3990	SIZE <b>A</b>		<b>5962-03234</b>
		REVISION LEVEL <b>F</b>	SHEET <b>6</b>

TABLE I. Electrical performance characteristics - Continued.

Test	Symbol	Conditions <u>1/ 2/</u> -55°C ≤ T <sub>A</sub> ≤ +125°C unless otherwise specified	Group A subgroups	Device type	Limits		Unit
					Min	Max	
Positive input leakage current (CH0-CH47)	+I <sub>SOFFOUTPUT(ALL)</sub>	V <sub>IN</sub> = +10 V, V <sub>EN</sub> = 4 V, output and all unused inputs = -10 V <u>5/ 6/</u>	1,2,3 <u>4/</u>	01,03	-100	+700	nA
			1	02	-20	+20	
			2,3 <u>4/</u>		-200	+200	
	+I <sub>SOFFCURRENT(ALL)</sub>	V <sub>IN</sub> = +10 V, V <sub>EN</sub> = 4 V, output and all unused inputs = -10 V <u>5/ 6/</u>	1,2,3 <u>4/</u>	01	-100	+700	
			1	02	-20	+20	
			2,3 <u>4/</u>		-200	+200	
Negative input leakage current (CH0-CH47)	-I <sub>SOFFOUTPUT(ALL)</sub>	V <sub>IN</sub> = -10 V, V <sub>EN</sub> = 4 V, output and all unused inputs = +10 V <u>5/ 6/</u>	1,2,3 <u>4/</u>	01,03	-100	+700	nA
			1	02	-20	+20	
			2,3 <u>4/</u>		-200	+200	
	-I <sub>SOFFCURRENT(ALL)</sub>	V <sub>IN</sub> = -10 V, V <sub>EN</sub> = 4 V, output and all unused inputs = +10 V <u>5/ 6/</u>	1,2,3 <u>4/</u>	01	-100	+700	
			1	02	-20	+20	
			2,3 <u>4/</u>		-200	+200	
Output leakage current outputs (pins 25, 68 and 70) Currents (pins 26, 67 and 69)	+I <sub>DOFFOUTPUT(ALL)</sub>	V <sub>IN</sub> = +10 V, V <sub>EN</sub> = 4 V, output and all unused inputs = -10 V <u>6/ 7/</u>	1,2,3 <u>4/</u>	All	-100	+100	nA
	+I <sub>DOFFCURRENT(ALL)</sub>	V <sub>IN</sub> = +10 V, V <sub>EN</sub> = 4 V, output and all unused inputs = -10 V <u>6/ 7/</u>	1,2,3 <u>4/</u>	01,02	-100	+100	nA
	-I <sub>DOFFOUTPUT(ALL)</sub>	V <sub>IN</sub> = -10 V, V <sub>EN</sub> = 4 V, output and all unused inputs = +10 V <u>6/ 7/</u>	1,2,3 <u>4/</u>	All	-100	+100	nA
	-I <sub>DOFFCURRENT(ALL)</sub>	V <sub>IN</sub> = -10 V, V <sub>EN</sub> = 4 V, output and all unused inputs = +10 V <u>6/ 7/</u>	1,2,3 <u>4/</u>	01,02	-100	+100	nA

See footnotes at end of table.

<b>STANDARD MICROCIRCUIT DRAWING</b> DLA LAND AND MARITIME COLUMBUS, OHIO 43218-3990	SIZE <b>A</b>		<b>5962-03234</b>
		REVISION LEVEL <b>F</b>	SHEET <b>7</b>

TABLE I. Electrical performance characteristics - Continued.

Test	Symbol	Conditions 1/ 2/ -55°C ≤ T <sub>A</sub> ≤ +125°C unless otherwise specified	Group A subgroups	Device type	Limits		Unit
					Min	Max	
Input clamped voltage (CH0-CH47)	+V <sub>CLMP(0-47)</sub>	V <sub>EN</sub> = 4 V, all unused inputs are open <u>6/</u>	1	01,03	18.0	23.0	V
			2		18.0	23.5	
			3		17.5	22.5	
	-V <sub>CLMP(0-47)</sub>	V <sub>EN</sub> = 4 V, all unused inputs are open <u>6/</u>	1	01,03	-23.0	-18.0	V
			2		-23.5	-18.0	
			3		-22.5	-17.5	
Switch ON resistance outputs (pins 25, 68, and 70)	R <sub>DS(ON)(0-47)A</sub>	V <sub>IN</sub> = +15 V, V <sub>EN</sub> = 0.8 V, I <sub>OUT</sub> = -1 mA <u>5/ 6/ 8/</u>	1,2,3	All	500	3000	Ω
	R <sub>DS(ON)(0-47)B</sub>	V <sub>IN</sub> = +5 V, V <sub>EN</sub> = 0.8 V, I <sub>OUT</sub> = -1 mA <u>5/ 6/ 8/</u>	1,2,3	All	500	3000	Ω
	R <sub>DS(ON)(0-47)C</sub>	V <sub>IN</sub> = -5 V, V <sub>EN</sub> = 0.8 V, I <sub>OUT</sub> = +1 mA <u>5/ 6/ 8/</u>	1,2,3	All	500	3000	Ω
Switch ON resistance outputs (pins 26, 67 and 69)	R <sub>DS(ON)(0-47)A</sub>	V <sub>IN</sub> = +15 V, V <sub>EN</sub> = 0.8 V, I <sub>OUT</sub> = -1 mA <u>5/ 6/ 8/</u>	1,2,3	01,02	500	3000	Ω
	R <sub>DS(ON)(0-47)B</sub>	V <sub>IN</sub> = +5 V, V <sub>EN</sub> = 0.8 V, I <sub>OUT</sub> = -1 mA <u>5/ 6/ 8/</u>	1,2,3	01,02	500	3000	Ω
	R <sub>DS(ON)(0-47)C</sub>	V <sub>IN</sub> = -5 V, V <sub>EN</sub> = 0.8 V, I <sub>OUT</sub> = +1 mA <u>5/ 6/ 8/</u>	1,2,3	01,02	500	3000	Ω
Switching tests	t <sub>ONA</sub>	R <sub>L</sub> = 10 kΩ, C <sub>L</sub> = 50 pF, see figure 4.	9,10	All	10	2000	ns
			11 <u>9/</u>		10	5000	
	t <sub>OFFA</sub>	R <sub>L</sub> = 10 kΩ, C <sub>L</sub> = 50 pF, see figure 4.	9,10	All	10	2000	ns
			11		10	5000	
	t <sub>ONEN</sub>	R <sub>L</sub> = 1 kΩ, C <sub>L</sub> = 50 pF, see figure 4.	9,10,11	01,02	10	1500	ns
	t <sub>OFFEN</sub>	R <sub>L</sub> = 1 kΩ, C <sub>L</sub> = 50 pF, see figure 4.	9,10,11	01,02	10	1000	ns

See footnotes at end of table.

<b>STANDARD MICROCIRCUIT DRAWING</b> DLA LAND AND MARITIME COLUMBUS, OHIO 43218-3990	SIZE <b>A</b>		<b>5962-03234</b>
		REVISION LEVEL <b>F</b>	SHEET <b>8</b>

TABLE I. Electrical performance characteristics - Continued.

- 1/  $+V_{CC} = +15\text{ V dc}$ ,  $-V_{EE} = -15\text{ V dc}$ , and  $V_{REF} = +5\text{ V dc}$ , unless otherwise specified. Recommended power supply turn on sequence :  $+V_{CC}$ ,  $-V_{EE}$ , followed by  $V_{REF}$ .
- 2/ Measure inputs sequentially. Ground all unused inputs.
- 3/ If not tested, shall be guaranteed to the limits specified in table I.
- 4/ Subgroup 3 for these parameters is guaranteed, but not production tested.
- 5/  $V_{IN}$  is the applied input voltage to the input channels (CH0-CH47).
- 6/  $V_{EN}$  is the applied input voltage to the enable lines EN(0-15), EN(16-31), and EN(32-47).
- 7/  $V_{OUT}$  is the applied input voltage to the output lines (OUTPUT(0-15), OUTPUT(16-31), OUTPUT(32-47) for all device types and CURRENT(0-15), CURRENT(16-31), and CURRENT(32-47) for device types 01 and 02 only.
- 8/ Negative current is the current flowing out of each of the pins. Positive current is the current flowing into each of the pins.
- 9/ Subgroup 11 for this parameter is guaranteed with  $R_L = 10\text{ k}\Omega$ , but production tested with No Load..

<b>STANDARD MICROCIRCUIT DRAWING</b> DLA LAND AND MARITIME COLUMBUS, OHIO 43218-3990	SIZE <b>A</b>		<b>5962-03234</b>
		REVISION LEVEL <b>F</b>	SHEET <b>9</b>

Case outline X.

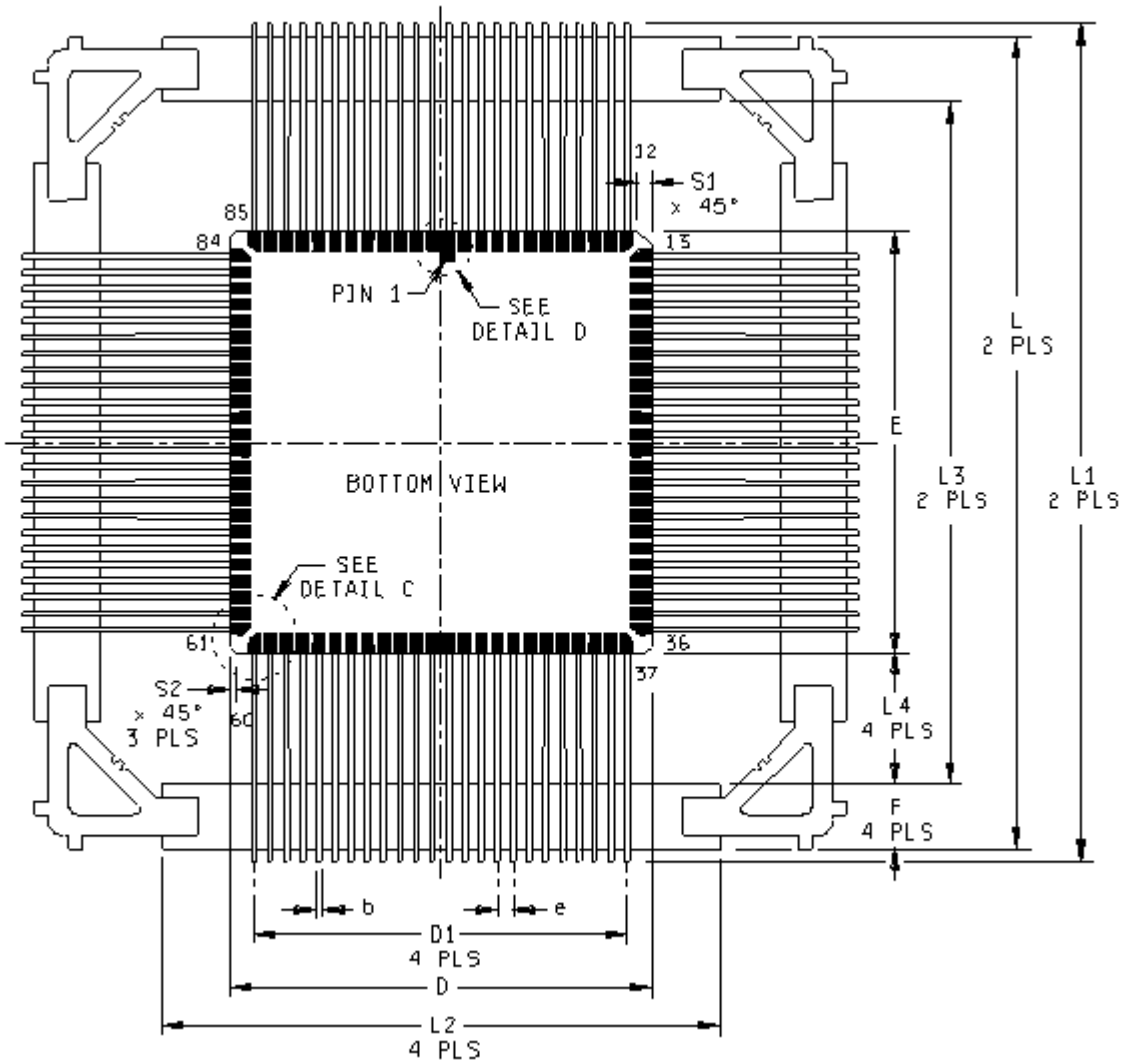


FIGURE 1. Case outline.

**STANDARD  
MICROCIRCUIT DRAWING**  
DLA LAND AND MARITIME  
COLUMBUS, OHIO 43218-3990

SIZE  
**A**

**5962-03234**

REVISION LEVEL  
**F**

SHEET **10**

Case outline X - Continued.

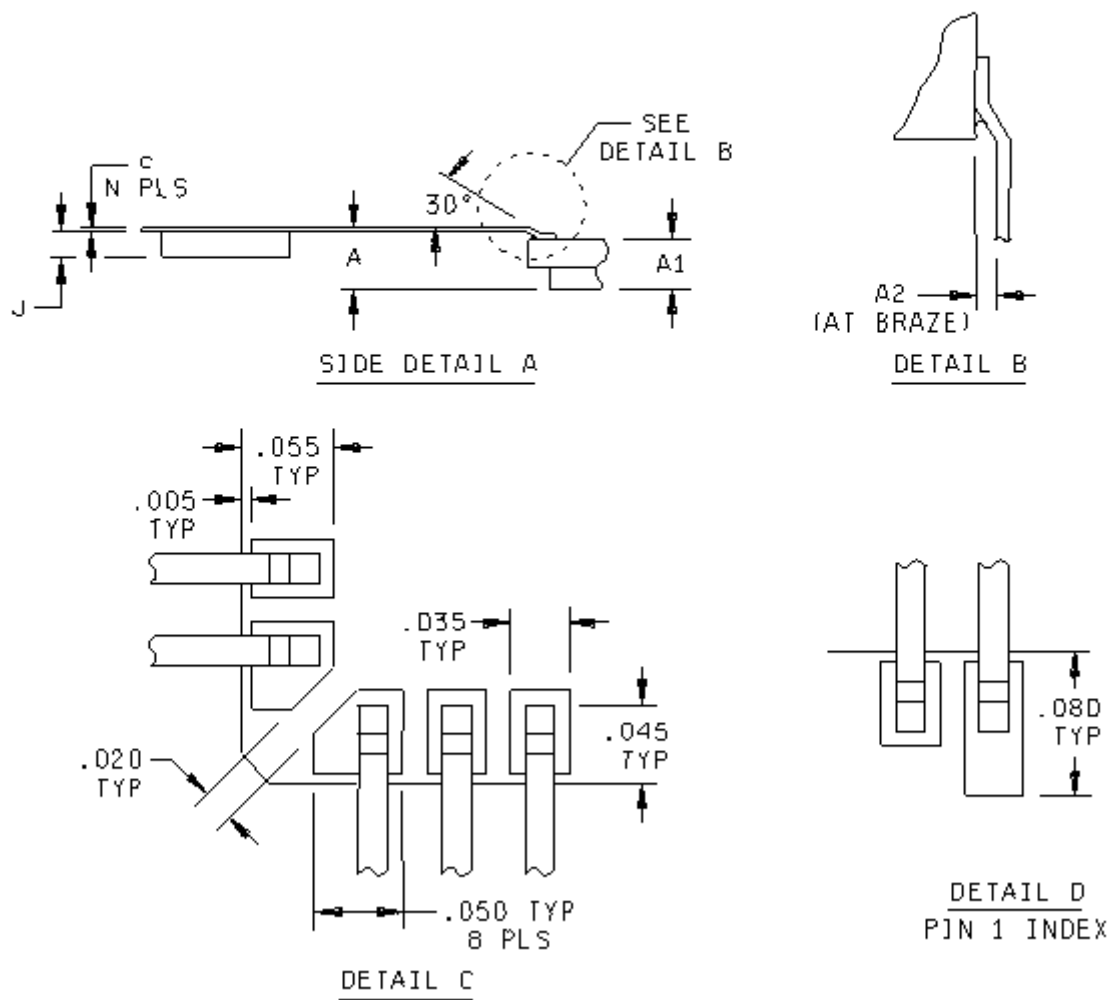


FIGURE 1. Case outline - Continued.

<b>STANDARD MICROCIRCUIT DRAWING</b> DLA LAND AND MARITIME COLUMBUS, OHIO 43218-3990	SIZE <b>A</b>		<b>5962-03234</b>
		REVISION LEVEL <b>F</b>	SHEET <b>11</b>

Case outline X - Continued.

Symbol	Millimeters		Inches	
	Min	Max	Min	Max
A		.200		5.08
A1		.180		4.57
A2	.005	.011	0.13	0.28
b	.0135	.0195	0.34	0.50
c	.005	.008	0.13	0.20
D/E	1.287	1.313	32.69	33.35
D1	1.145	1.155	29.08	29.34
e	.050 BSC		1.27 BSC	
F	.200 TYP		5.08 TYP	
J	.035 TYP		0.89 TYP	
L	2.490	2.510	63.25	63.75
L1		2.580		65.53
L2	1.700	1.740	43.18	44.20
L3	2.090	2.110	53.09	53.59
L4	.400 TYP		10.16 TYP	
N	96		96	
S1	.030 TYP		0.76 TYP	
S2	.015 TYP		0.38 TYP	

NOTES:

1. Pin 1 is indicated by an ESD triangle on top of the package and by an index on the bottom of the package.
2. The U.S. preferred system of measurement is the metric SI. This item was designed using inch-pound units of measurement. In case of problems involving conflicts between the metric and inch-pound units, the inch-pound units shall rule.
3. N equals 96, the total number of leads on the package.
4. Pin numbers are for reference only.

FIGURE 1. Case outline - Continued.

<b>STANDARD MICROCIRCUIT DRAWING</b> DLA LAND AND MARITIME COLUMBUS, OHIO 43218-3990	SIZE <b>A</b>		<b>5962-03234</b>
		REVISION LEVEL <b>F</b>	SHEET <b>12</b>

Device type	01 and 02				
Case outline	X				
Terminal number	Terminal symbol	Terminal number	Terminal symbol	Terminal number	Terminal symbol
1	A2	33	CH 11	65	CH 33
2	NC	34	NC	66	CH 32
3	A3	35	CH 12	67	OUTPUT I(32-47)
4	NC	36	NC	68	OUTPUT V(32-47)
5	$\overline{\text{EN}}$ 0-15	37	CH 13	69	OUTPUT I(16-31)
6	NC	38	NC	70	OUTPUT V(16-31)
7	CH 0	39	CH 14	71	GND
8	NC	40	NC	72	GND
9	CH 1	41	CH 15	73	CH 31
10	NC	42	NC	74	CH 30
11	CH 2	43	NC	75	CH 29
12	NC	44	+V <sub>CC</sub>	76	CH 28
13	CH 3	45	NC	77	CH 27
14	NC	46	-V <sub>EE</sub>	78	CH 26
15	CH 4	47	NC	79	CH 25
16	NC	48	V <sub>REF</sub>	80	CH 24
17	CH 5	49	NC	81	CH 23
18	NC	50	Case GND	82	CH 22
19	CH 6	51	CH 47	83	CH 21
20	NC	52	CH 46	84	CH 20
21	CH 7	53	CH 45	85	CH 19
22	NC	54	CH 44	86	CH 18
23	GND	55	CH 43	87	CH 17
24	GND	56	CH 42	88	CH 16
25	OUTPUT V(0-15)	57	CH 41	89	GND
26	OUTPUT I(0-15)	58	CH 40	90	GND
27	CH 8	59	CH 39	91	$\overline{\text{EN}}$ 32-47
28	NC	60	CH 38	92	$\overline{\text{EN}}$ 16-31
29	CH 9	61	CH 37	93	A0
30	NC	62	CH 36	94	NC
31	CH 10	63	CH 35	95	A1
32	NC	64	CH 34	96	NC

NOTE: NC is a no connect pin. NC pins should be grounded to eliminate or minimize electrostatic discharge (ESD) or static buildup.

FIGURE 2. Terminal connections.

<b>STANDARD MICROCIRCUIT DRAWING</b> DLA LAND AND MARITIME COLUMBUS, OHIO 43218-3990	SIZE <b>A</b>		<b>5962-03234</b>
		REVISION LEVEL <b>F</b>	SHEET <b>13</b>

Device type	03				
Case outline	X				
Terminal number	Terminal symbol	Terminal number	Terminal symbol	Terminal number	Terminal symbol
1	A2	33	CH 11	65	CH 33
2	NC	34	NC	66	CH 32
3	A3	35	CH 12	67	NC
4	NC	36	NC	68	OUTPUT V(32-47)
5	$\overline{\text{EN}}$ 0-15	37	CH 13	69	NC
6	NC	38	NC	70	OUTPUT V(16-31)
7	CH 0	39	CH 14	71	GND
8	NC	40	NC	72	GND
9	CH 1	41	CH 15	73	CH 31
10	NC	42	NC	74	CH 30
11	CH 2	43	NC	75	CH 29
12	NC	44	+V <sub>CC</sub>	76	CH 28
13	CH 3	45	NC	77	CH 27
14	NC	46	-V <sub>EE</sub>	78	CH 26
15	CH 4	47	NC	79	CH 25
16	NC	48	V <sub>REF</sub>	80	CH 24
17	CH 5	49	NC	81	CH 23
18	NC	50	Case GND	82	CH 22
19	CH 6	51	CH 47	83	CH 21
20	NC	52	CH 46	84	CH 20
21	CH 7	53	CH 45	85	CH 19
22	NC	54	CH 44	86	CH 18
23	GND	55	CH 43	87	CH 17
24	GND	56	CH 42	88	CH 16
25	OUTPUT V(0-15)	57	CH 41	89	GND
26	NC	58	CH 40	90	GND
27	CH 8	59	CH 39	91	$\overline{\text{EN}}$ 32-47
28	NC	60	CH 38	92	$\overline{\text{EN}}$ 16-31
29	CH 9	61	CH 37	93	A0
30	NC	62	CH 36	94	NC
31	CH 10	63	CH 35	95	A1
32	NC	64	CH 34	96	NC

NOTE: NC is a no connect pin. NC pins should be grounded to eliminate or minimize electrostatic discharge (ESD) or static buildup.

FIGURE 2. Terminal connections - Continued.

<b>STANDARD MICROCIRCUIT DRAWING</b> DLA LAND AND MARITIME COLUMBUS, OHIO 43218-3990	SIZE <b>A</b>		<b>5962-03234</b>
		REVISION LEVEL <b>F</b>	SHEET <b>14</b>

Truth table (CH0-CH15)					
A3	A2	A1	A0	EN (0-15)	"ON" Channel <u>1/</u>
X	X	X	X	H	None
L	L	L	L	L	CH 0
L	L	L	H	L	CH 1
L	L	H	L	L	CH 2
L	L	H	H	L	CH 3
L	H	L	L	L	CH 4
L	H	L	H	L	CH 5
L	H	H	L	L	CH 6
L	H	H	H	L	CH 7
H	L	L	L	L	CH 8
H	L	L	H	L	CH 9
H	L	H	L	L	CH 10
H	L	H	H	L	CH 11
H	H	L	L	L	CH 12
H	H	L	H	L	CH 13
H	H	H	L	L	CH 14
H	H	H	H	L	CH 15

1/ Between CH 0-15 and OUTPUT (0-15) for device types 01 - 03 and CURRENT (0-15) for device types 01 and 02 only.

Truth table (CH 16 - CH 31)					
A3	A2	A1	A0	EN (0-15)	"ON" Channel <u>1/</u>
X	X	X	X	H	None
L	L	L	L	L	CH 16
L	L	L	H	L	CH 17
L	L	H	L	L	CH 18
L	L	H	H	L	CH 19
L	H	L	L	L	CH 20
L	H	L	H	L	CH 21
L	H	H	L	L	CH 22
L	H	H	H	L	CH 23
H	L	L	L	L	CH 24
H	L	L	H	L	CH 25
H	L	H	L	L	CH 26
H	L	H	H	L	CH 27
H	H	L	L	L	CH 28
H	H	L	H	L	CH 29
H	H	H	L	L	CH 30
H	H	H	H	L	CH 31

1/ Between CH 16-31 and OUTPUT (16-31) for device types 01 - 03 and CURRENT (16-31) for device types 01 and 02 only.

FIGURE 3. Truth table(s).

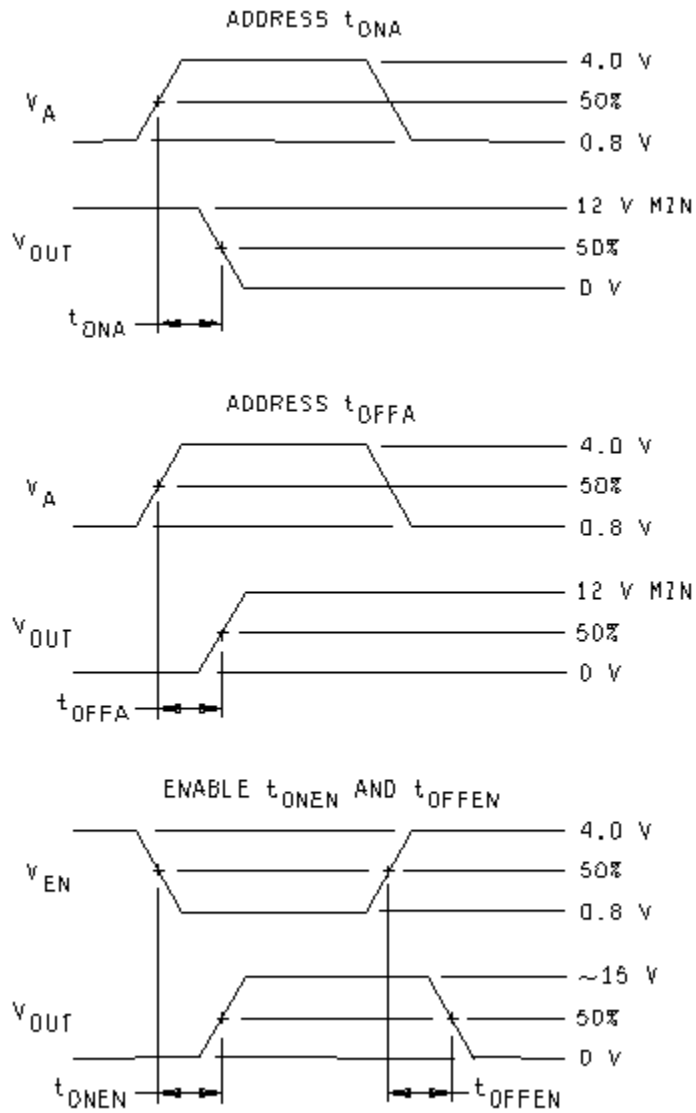
<b>STANDARD MICROCIRCUIT DRAWING</b> DLA LAND AND MARITIME COLUMBUS, OHIO 43218-3990	SIZE <b>A</b>		<b>5962-03234</b>
		REVISION LEVEL <b>F</b>	SHEET <b>15</b>

Truth table (CH 32 - CH 47)					
A3	A2	A1	A0	EN (0-15)	"ON" Channel <u>1/</u>
X	X	X	X	H	None
L	L	L	L	L	CH 16
L	L	L	H	L	CH 17
L	L	H	L	L	CH 18
L	L	H	H	L	CH 19
L	H	L	L	L	CH 20
L	H	L	H	L	CH 21
L	H	H	L	L	CH 22
L	H	H	H	L	CH 23
H	L	L	L	L	CH 24
H	L	L	H	L	CH 25
H	L	H	L	L	CH 26
H	L	H	H	L	CH 27
H	H	L	L	L	CH 28
H	H	L	H	L	CH 29
H	H	H	L	L	CH 30
H	H	H	H	L	CH 31

1/ Between CH 32-47 and OUTPUT (32-47) for device types 01 - 03 and CURRENT (32-47) for device types 01 and 02 only.

FIGURE 3. Truth tale(s) - Continued.

<b>STANDARD MICROCIRCUIT DRAWING</b> DLA LAND AND MARITIME COLUMBUS, OHIO 43218-3990	SIZE <b>A</b>		<b>5962-03234</b>
		REVISION LEVEL <b>F</b>	SHEET <b>16</b>



NOTE:  $f = 10 \text{ kHz}$ , duty cycle = 50%

FIGURE 4. Switching test waveform(s).

**STANDARD  
MICROCIRCUIT DRAWING**  
DLA LAND AND MARITIME  
COLUMBUS, OHIO 43218-3990

SIZE  
**A**

**5962-03234**

REVISION LEVEL  
**F**

SHEET **17**

Device type 01

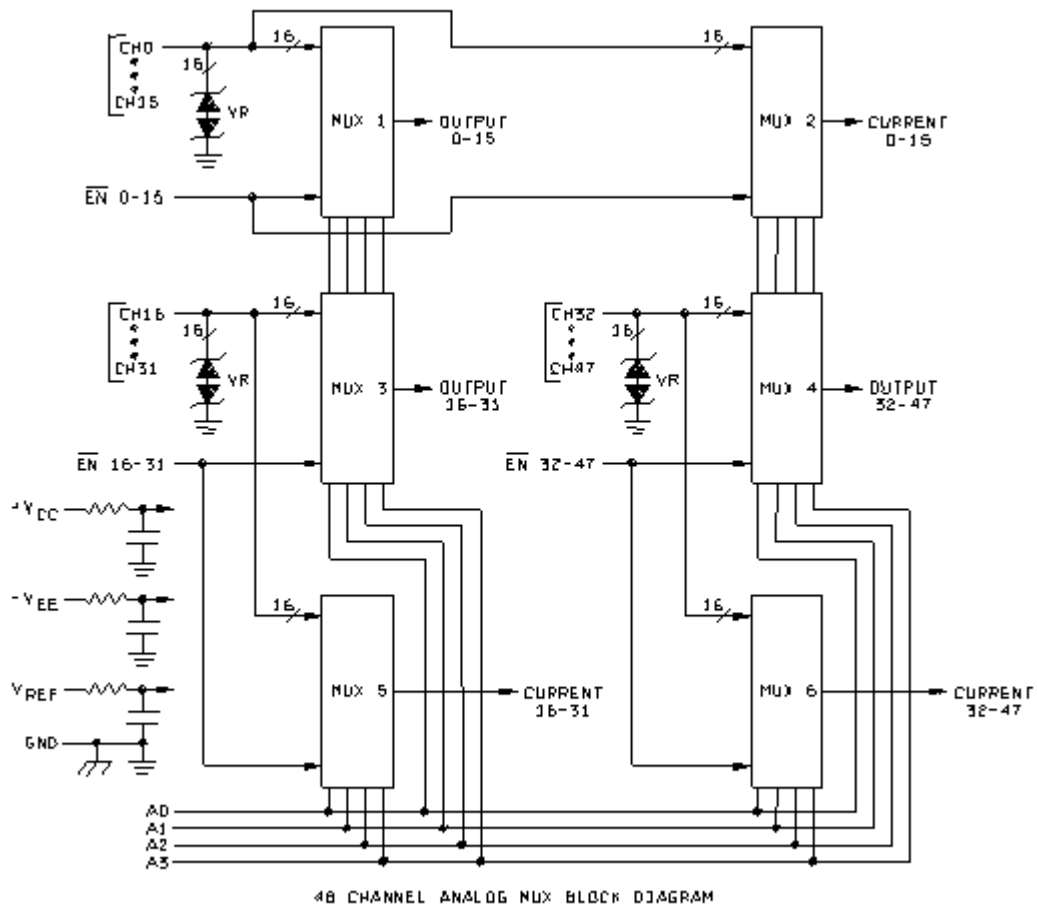


FIGURE 5. Block diagram.

**STANDARD  
MICROCIRCUIT DRAWING**  
DLA LAND AND MARITIME  
COLUMBUS, OHIO 43218-3990

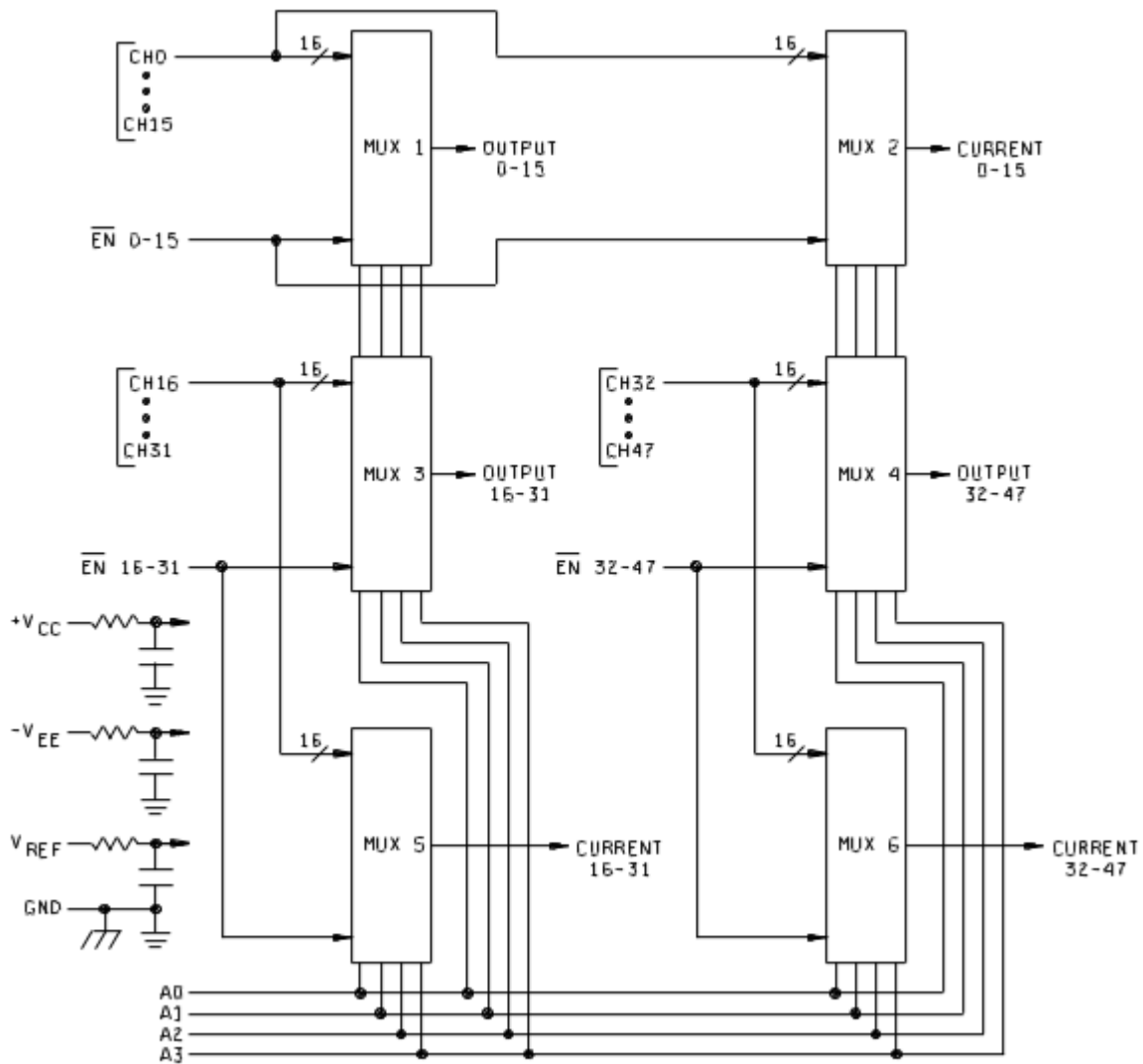
SIZE  
**A**

**5962-03234**

REVISION LEVEL  
**F**

SHEET **18**

Device type 02



48 CHANNEL ANALOG MUX BLOCK DIAGRAM

FIGURE 5. Block diagram - Continued.

**STANDARD  
MICROCIRCUIT DRAWING**  
DLA LAND AND MARITIME  
COLUMBUS, OHIO 43218-3990

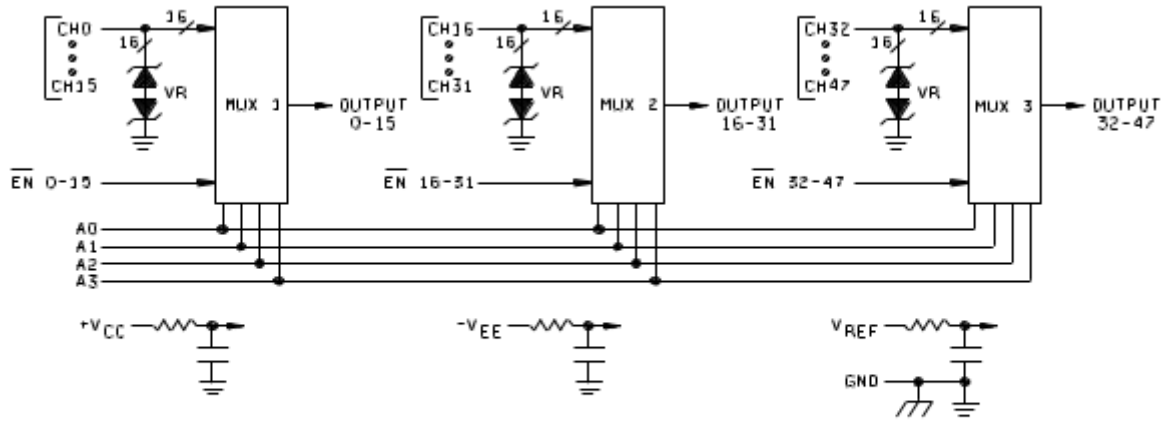
SIZE  
**A**

**5962-03234**

REVISION LEVEL  
**F**

SHEET **19**

Device type 03



48 CHANNEL ANALOG MUX BLOCK DIAGRAM

FIGURE 5. Block diagram - Continued.

**STANDARD  
MICROCIRCUIT DRAWING**  
DLA LAND AND MARITIME  
COLUMBUS, OHIO 43218-3990

SIZE  
**A**

**5962-03234**

REVISION LEVEL  
**F**

SHEET **20**

TABLE II. Electrical test requirements.

MIL-PRF-38534 test requirements	Subgroups (in accordance with MIL-PRF-38534, group A test table)
Interim electrical parameters	1, 9
Final electrical parameters	1*, 2, 3, 9, 10, 11
Group A test requirements	1, 2, 3, 9, 10, 11
Group C end-point electrical parameters	1, 2, 3, 9, 10, 11
End-point electrical parameters for radiation hardness assurance (RHA) devices	Not applicable

\* PDA applies to subgroup 1.

#### 4. VERIFICATION

4.1 Sampling and inspection. Sampling and inspection procedures shall be in accordance with MIL-PRF-38534 or as modified in the device manufacturer's Quality Management (QM) plan. The modification in the QM plan shall not affect the form, fit, or function as described herein.

4.2 Screening. Screening shall be in accordance with MIL-PRF-38534. The following additional criteria shall apply:

- a. Burn-in test, method 1015 of MIL-STD-883.
  - (1) Test condition A, B, C, or D. The test circuit shall be maintained by the manufacturer under document revision level control and shall be made available to either DLA Land and Maritime -VA or the acquiring activity upon request. Also, the test circuit shall specify the inputs, outputs, biases, and power dissipation, as applicable, in accordance with the intent specified in test method 1015 of MIL-STD-883.
  - (2) TA as specified in accordance with table I of method 1015 of MIL-STD-883.
- b. Interim and final electrical test parameters shall be as specified in table II herein, except interim electrical parameter tests prior to burn-in are optional at the discretion of the manufacturer.

4.3 Conformance and periodic inspections. Conformance inspection (CI) and periodic inspection (PI) shall be in accordance with MIL-PRF-38534 and as specified herein.

4.3.1 Group A inspection (CI). Group A inspection shall be in accordance with MIL-PRF-38534 and as follows:

- a. Tests shall be as specified in table II herein.
- b. Subgroups 4, 5, 6, 7, and 8 shall be omitted.

<b>STANDARD MICROCIRCUIT DRAWING</b> DLA LAND AND MARITIME COLUMBUS, OHIO 43218-3990	SIZE <b>A</b>		<b>5962-03234</b>
		REVISION LEVEL <b>F</b>	SHEET <b>21</b>

4.3.2 Group B inspection (PI). Group B inspection shall be in accordance with MIL-PRF-38534.

4.3.3 Group C inspection (PI). Group C inspection shall be in accordance with MIL-PRF-38534 and as follows:

- a. End-point electrical parameters shall be as specified in table II herein.
- b. Steady-state life test, method 1005 of MIL-STD-883.
  - (1) Test condition A, B, C, or D. The test circuit shall be maintained by the manufacturer under document revision level control and shall be made available to either DLA Land and Maritime -VA or the acquiring activity upon request. Also, the test circuit shall specify the inputs, outputs, biases, and power dissipation, as applicable, in accordance with the intent specified in test method 1005 of MIL-STD-883.
  - (2) TA as specified in accordance with table I of method 1005 of MIL-STD-883.
  - (3) Test duration: 1,000 hours, except as permitted by method 1005 of MIL-STD-883.

4.3.4 Group D inspection (PI). Group D inspection shall be in accordance with MIL-PRF-38534.

4.3.5. Radiation hardness assurance (RHA). RHA qualification is required only for those devices with the RHA designator as specified herein.

4.3.5.1 Radiation Hardness Assurance (RHA) inspection. RHA qualification is required for those devices with the RHA designator as specified herein. End-point electrical parameters for radiation hardness assurance (RHA) devices shall be specified in table II. Radiation testing will be in accordance with the qualifying activity (DLA Land and Maritime -VQ) approved plan and with MIL-PRF-38534, Appendix G.

- a. The hybrid device manufacturer shall establish procedures controlling component radiation testing, and shall establish radiation test plans used to implement component lot qualification during procurement. Test plans and test reports shall be filed and controlled in accordance with the manufacturer's configuration management system.
- b. The hybrid device manufacturer shall designate a RHA program manager to oversee component lot qualification, and to monitor design changes for continued compliance to RHA requirements.

4.3.5.1.1 Hybrid level RHA qualification. Hybrid level testing is not performed since the only active element other than diodes is a QML class V RHA-Radhard to level F (300 krad(Si) ELDRS and SEL free device. The hybrid package is a larger version of the class V flat package on 5962-95630 with a nickel underside lid, seam-sealed and with internal gas analysis data supporting negligible amounts of hydrogen in the package.

4.3.5.2 Qualification by similarity. The devices on this SMD are considered similar differing only in the number of 5962F9563002V9A die and the supporting diodes, capacitors, and resistors that go with each one.

4.3.5.3 Element level qualification.

4.3.5.3.1 Total ionizing dose irradiation. See SMD 5962-95630.

4.3.5.3.1.1 Single Event Phenomena (SEP). See SMD 5962-95630.

4.3.5.3.1.2 Radiation Lot Acceptance Testing (RLAT). The only active element other than diodes in these devices are purchased as 5962F9563002V9A. The radiation performance and post radiation electrical specifications in table I of this drawing are reflective of those specified in 5962-95630 device type 02.

4.3.5.4 Technologies not tested. Testing is not performed on device technologies including diodes, that the manufacturer considers to be radiation hardened.

<b>STANDARD MICROCIRCUIT DRAWING</b> DLA LAND AND MARITIME COLUMBUS, OHIO 43218-3990	<b>SIZE A</b>		<b>5962-03234</b>
		REVISION LEVEL F	SHEET <b>22</b>

5. PACKAGING

5.1 Packaging requirements. The requirements for packaging shall be in accordance with MIL-PRF-38534.

6. NOTES

6.1 Intended use. Microcircuits conforming to this drawing are intended for use for Government microcircuit applications (original equipment), design applications, and logistics purposes.

6.2 Replaceability. Microcircuits covered by this drawing will replace the same generic device covered by a contractor-prepared specification or drawing.

6.3 Configuration control of SMD's. All proposed changes to existing SMD's will be coordinated with the users of record for the individual documents. This coordination will be accomplished using DD Form 1692, Engineering Change Proposal, or email communication.

6.4 Record of users. Military and industrial users should inform DLA Land and Maritime when a system application requires configuration control and the applicable SMD to that system. DLA Land and Maritime will maintain a record of users and this list will be used for coordination and distribution of changes to the drawings. Users of drawings covering microelectronic devices (FSC 5962) should contact DLA Land and Maritime-VA, telephone (614) 692-8108.

6.5 Comments. Comments on this drawing should be directed to DLA Land and Maritime-VA, Columbus, Ohio 43218-3990, or telephone (614) 692-1081.

6.6 Sources of supply. Sources of supply are listed in MIL-HDBK-103 and QML-38534. The vendors, listed in MIL-HDBK-103 and QML-38534, have submitted a certificate of compliance (see 3.7 herein) to DLA Land and Maritime-VA and have agreed to this drawing.

<b>STANDARD MICROCIRCUIT DRAWING</b> DLA LAND AND MARITIME COLUMBUS, OHIO 43218-3990	SIZE <b>A</b>		<b>5962-03234</b>
		REVISION LEVEL <b>F</b>	SHEET <b>23</b>

STANDARD MICROCIRCUIT DRAWING BULLETIN

DATE: 22-08-12

Approved sources of supply for SMD 5962-03234 are listed below for immediate acquisition information only and shall be added to MIL-HDBK-103 and QML-38534 during the next revision. MIL-HDBK-103 and QML-38534 will be revised to include the addition or deletion of sources. The vendors listed below have agreed to this drawing and a certificate of compliance has been submitted to and accepted by DLA Land and Maritime-VA. This information bulletin is superseded by the next dated revision of MIL-HDBK-103 and QML-38534. DLA Land and Maritime maintains an online database of all current sources of supply at <https://landandmaritimeapps.dla.mil/programs/smcr/>.

Standard microcircuit drawing PIN <u>1/</u>	Vendor CAGE number	Vendor similar PIN <u>2/</u>
5962-0323401KXC 5962F0323401KXC	88379 88379	ACT8502-S ACT8502-901-1S
5962-0323402KXC 5962F0323402KXC	88379 88379	ACT8506-S ACT8506-901-1S
5962-0323403KXC 5962F0323403KXC	88379 88379	ACT8503-S ACT8503-901-1S

- 1/ The lead finish shown for each PIN representing a hermetic package is the most readily available from the manufacturer listed for that part. If the desired lead finish is not listed contact the vendor to determine its availability.
- 2/ Caution. Do not use this number for item acquisition. Items acquired to this number may not satisfy the performance requirements of this drawing.

Vendor CAGE  
number

88379

Vendor name  
and address

Cobham Advanced Electronic Solutions Inc.  
35 South Service Road  
Plainview, NY 11803-4193

The information contained herein is disseminated for convenience only and the Government assumes no liability whatsoever for any inaccuracies in the information bulletin.